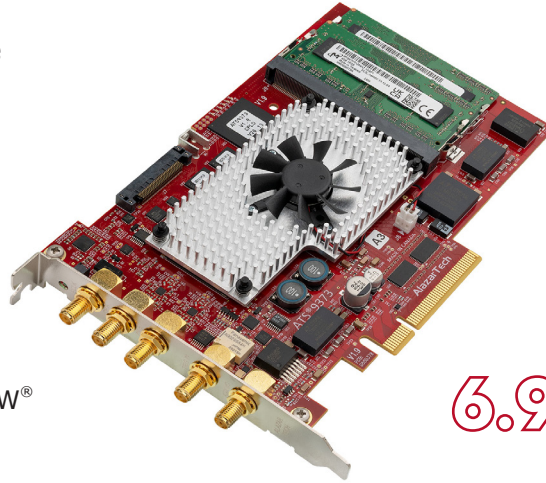


- Up to 4 GS/s 12-bit A/D conversion
- 6.9 GB/s PCIe Gen 3 (8-lane) interface
- 2 channel operation at 2 GS/s
- FPGA-based FFT processing
- Variable frequency external clocking
- Continuous streaming mode
- $\pm 400$  mV fixed input range
- Optional 1.9 GHz wideband upgrade
- AlazarDSO<sup>®</sup> oscilloscope software
- Software Development Kit supports C/C++, C#, Python, MATLAB<sup>®</sup>, LabVIEW<sup>®</sup>
- Support for Windows<sup>®</sup> & Linux<sup>®</sup>



6.9 GB/s

Product	Bus	Operating System	Channels	Max. Sample Rate	Bandwidth	Memory Per Channel	Resolution
ATS9373	PCIe x8 Gen 3	64-bit Windows & 64-bit Linux	2	4 GS/s - 1 ch 2 GS/s - 2 ch	1.0 GHz or Optional 1.9 GHz	4/2 Gigasamples in single/dual channel mode	12 bits

### Overview

AlazarTech ATS<sup>®</sup>9373 is an 8-lane PCI Express Gen 3 (PCIe x8), single or dual-channel, high-speed, 12-bit, 4 GS/s or 2 GS/s waveform digitizer card capable of acquiring data into its on-board 8 GB memory or streaming acquired data to PC memory at rates up to 6.9 GB/s.

It is also possible to do FPGA-based 4096-point FFT on acquired data. This is useful for Optical Coherence Tomography (OCT) related applications.

There are two A/D converters on the ATS9373 board, each running at 2 GS/s. ATS9373 uses interleaved sampling (DES mode) to achieve 4 GS/s sampling.

Optional variable frequency external clock allows operation from 2 GHz down to 500 MHz when using DES mode and from 2 GHz down to 300 MHz when operating in non-DES mode (or 100 MHz for screened ATS9373 cards), making ATS9373 an ideal waveform digitizer for many applications.

Users can capture data from one trigger or a burst of triggers. Users can also stream very large datasets continuously to PC memory or hard disk.

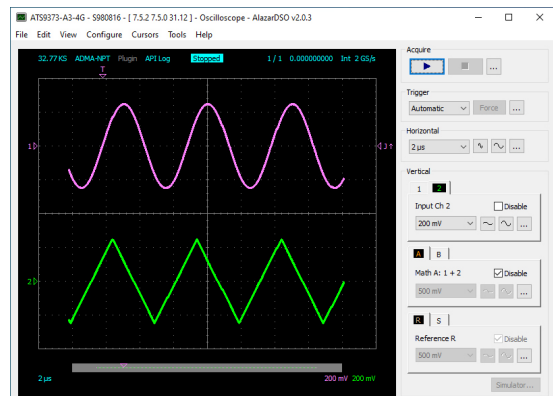
ATS9373 is supplied with AlazarDSO software that lets the user start data acquisition immediately, without having to go through a software development process.

Users who need to integrate the ATS9373 in their own program can purchase a software development kit, ATS-SDK, for C/C++, C#, Python, MATLAB, and LabVIEW for both Windows and Linux operating systems.

All of this advanced functionality is packaged in a low power, half-length PCI Express Gen 3 card.

### Applications

- Optical Coherence Tomography (OCT)
- Ultrasonic & Eddy Current NDT/NDE
- RF Signal Recording & Analysis
- Terabyte Storage Oscilloscope
- High-Resolution Oscilloscope
- Spectroscopy
- Multi-Channel Transient Recording



### PCI Express Gen 3 Bus Interface

ATS9373 interfaces to the host computer using an 8-lane PCI Express bus. Each lane operates at 8.0 Gbps (Gen 3).

In PCB version 1.9 and above, the physical PCIe Gen 3 x8 interface is provided by discrete PCIe redrivers.

For previous PCB versions, both the physical and logical PCIe Gen 3 x8 interface is provided by the on-board FPGA, which also integrates acquisition control functions, memory management functions, acquisition datapath and DSP logic. This very high degree of integration maximizes product reliability.

Some PCIe slots use open-ended sockets to allow for longer cards. As such, ATS9373 requires at least one free 8-lane, or 16-lane, or an open-ended slot on the motherboard.

Note: The number of lanes actually connected to a PCIe slot may be fewer than the number supported by the physical slot size. In other words, an 8-lane slot may not provide a x8 electrical connection. Users must ensure that the slot is electrically x8 and Gen 3 or higher to achieve maximum sustained transfer rates with ATS9373.

ATS9373 is fully compatible with PCIe Gen 1, Gen 2 or Gen 3 motherboards. At run-time, ATS9373 and the motherboard negotiate the appropriate link speed and width.

PCIe Gen 4 and Gen 5 include a new feature called Data Link Feature Exchange (DLF or DLFE), which is not supported by PCIe Gen 3. Most motherboards have the DLF feature set to "Enabled" or "Auto", which makes the motherboard incompatible with PCIe Gen 3 adapters, such as ATS9373.

For ATS9373 to work in a Gen 4 or Gen 5 motherboard, Data Link Feature Exchange must be set to "Disabled" in the BIOS. More details: [FAQ\\_1083](#).

The AlazarTech® 6.9 GB/s benchmark was done on an ASUS® WS X299 SAGE motherboard.

### Analog Input

An ATS9373 features two analog input channels. Each channel has up to 1.0 GHz of full power analog input bandwidth.

Customers can also order a wideband input upgrade (order number ATS9373-009), which increases the bandwidth to 1.9 GHz in non-DES mode and 1.7 GHz in DES mode.

Input voltage range is fixed at  $\pm 400$  mV.

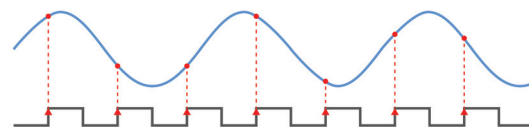
It must be noted that input impedance of both channels is fixed at 50  $\Omega$ . Input coupling is fixed to DC.

### Acquisition System

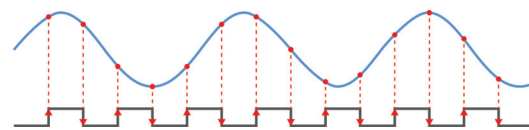
ATS9373 PCI Express digitizers use state of the art dual 2 GS/s, 12-bit ADCs to digitize the input signals. The two ADCs can be used in dual edge sampling (DES) mode to achieve 4 GS/s sample rate.

If used in dual-channel mode, the two channels are guaranteed to be simultaneous, as the two ADCs use a common clock.

An acquisition can consist of multiple records, with each record being captured as a result of one trigger event. A record can contain both pre-trigger and post-trigger data. Up to 8064 pre-trigger points can be captured in single channel mode and 3968 in dual-channel mode. ATS9373 can capture an infinite number of triggers. In between the multiple triggers being captured, the acquisition system is re-armed by the hardware within 256 sampling clock cycles.



Non-DES Sampling



DES Sampling

This mode of capture, sometimes referred to as Multiple Record, is very useful for capturing data in applications with a very rapid or unpredictable trigger rate. Examples of such applications include medical imaging, ultrasonic testing, OCT and NMR spectroscopy.

### On-Board Acquisition Memory

ATS9373 features two DDR3 SODIMM sockets that can each be populated with a 4 GB SODIMM, for a total on-board memory of 8 GB (4 Gigasamples).

This on-board memory is used as a very deep FIFO to temporarily store acquired ADC data before transferring it to motherboard memory using proprietary DMA engines. This on-board buffer allows loss-less data transfer even if the computer is temporarily interrupted by other tasks.

### Maximum Sustained Bus Throughput

PCI Express support on different motherboards may vary, resulting in non-optimal data transfer rates. The reasons behind these differences are complex and varied and will not be discussed here.

ATS9373 users can quickly determine the maximum sustained transfer rate for their motherboard by inserting their card in a PCIe slot and running the bus

benchmarking tool provided in AlazarDSO for Windows or AlazarFrontPanel for Linux.

### Digitizer Transfer Speed

The digitizer transfer speed is limited by the lower of:

- Bus Throughput
- Cumulative ADC Data Rate

The PCIe Gen 3 x8 bus throughput is 6.9 GB/s.

The Cumulative ADC Data Rate represents the maximum data the digitizer can generate and is calculated as:

Number of channels × Max. sampling rate × Bytes per sample

$$\text{ATS9373: } 2 \text{ channels} \times 2 \text{ GS/s} \times 2 = 8 \text{ GB/s}$$

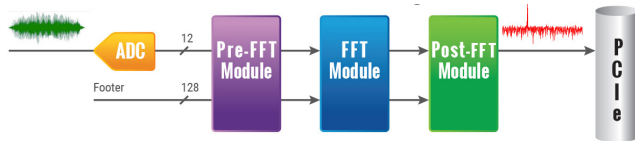
The Cumulative ADC Data Rate for ATS9373 is 8 GB/s and the bus throughput is 6.9 GB/s. Therefore, the digitizer transfer speed for ATS9373 is 6.9 GB/s.

### Recommended Motherboards or PCs

Many different types of motherboards and PCs have been benchmarked by AlazarTech. The ones that have produced the best throughput results (up to 6.9 GB/s) are [listed here](#).

### FPGA-Based FFT Processing

It is now possible to do real-time FFT signal processing using the on-board FPGA. Note that only one input can be processed.



Up to 4096-point FFT length is supported. A user programmable complex windowing function can be applied to the acquired data before FFT calculation.

The complex FFT output is converted to magnitude in single-precision floating-point format. A logarithmic output is also available.

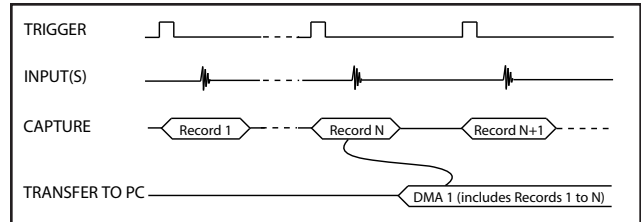
It is also possible to DMA both frequency and time domain data. This allows users to verify FPGA-based FFT operation during algorithm development.

The standard ATS9373-A3 can perform 250,000 4096-point FFTs per second, whereas ATS9373-D6 can do as many as 1,000,000 FFTs per second, i.e. gapless FFT.

### No Pre-Trigger (NPT) AutoDMA

Many ultrasonic scanning and medical imaging applications do not need any pre-trigger data: only post-trigger data is sufficient.

NPT AutoDMA is designed specifically for these applications. By only storing post-trigger data, the memory bandwidth is optimized and the entire on-board memory acts like a very deep FIFO.



Note that a DMA is not started until (RecordsPerBuffer + 1) number of records (triggers) have been acquired and written to the on-board memory.

NPT AutoDMA buffers do not include headers. However, users can specify that each record should come with its own footer that contains a 40-bit trigger timestamp. The footer is called NPT Footer.

More importantly, a BUFFER\_OVERFLOW flag is asserted only if the entire on-board memory is used up. This provides a very substantial improvement over Traditional AutoDMA.

NPT AutoDMA can easily acquire data to PC host memory at the maximum sustained transfer rate of the motherboard without causing an overflow.

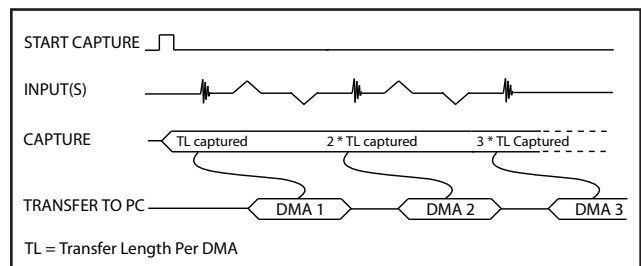
This is the recommended mode of operation for most ultrasonic scanning, OCT and medical imaging applications.

It should be noted that even though this mode is called "No Pre Trigger", it is now possible to do limited pre-trigger data captures, i.e. up to 8192 points in single channel mode and 4096 points in dual channel mode.

### Continuous AutoDMA

Continuous AutoDMA is also known as the data streaming mode.

In this mode, data starts streaming across the PCIe bus as soon as the ATS9373 is armed for acquisition. It is important to note that triggering is disabled in this mode.



Continuous AutoDMA buffers do not include headers, so it is not possible to get trigger time-stamps. A BUFFER\_OVERFLOW flag is asserted only if the entire on-board memory is used up.

The amount of data to be captured is controlled by counting the number of buffers acquired. Acquisition is stopped by an AbortCapture command.

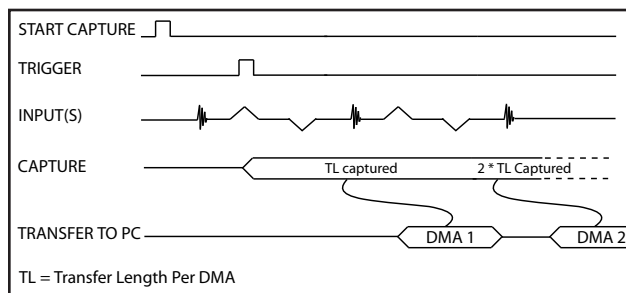
Continuous AutoDMA can easily acquire data to PC host memory at the maximum sustained transfer rate of the motherboard without causing an overflow. This is the recommended mode for very long signal recording.

### Triggered Streaming AutoDMA

Triggered Streaming AutoDMA is virtually the same as Continuous mode, except the data transfer across the bus is held off until a trigger event has been detected. Triggered Streaming AutoDMA buffers do not include headers, so it is not possible to get trigger time-stamps.

A BUFFER\_OVERFLOW flag is asserted only if the entire on-board memory is used up.

As in Continuous mode, the amount of data to be captured is controlled by counting the number of buffers acquired. Acquisition is stopped by an AbortCapture command.



Triggered Streaming AutoDMA can easily acquire data to PC host memory at the maximum sustained transfer rate of the motherboard without causing an overflow. This is the recommended mode for RF signal recording that has to be started at a specific time, e.g. based on a GPS pulse.

### Multi-board Systems using ATS 4X1G

ATS9373: Sync 4X1G is a device that allows simultaneous sampling across multiple independent ATS9373 waveform digitizers. This is achieved by providing common clock and trigger signals to each digitizer.



Sync 4X1G supports Trigger Enable and Trigger Disable so that users can delay triggering until all digitizers are armed; this is a distinct advantage over passive signal splitters.

Note: The maximum frequency for internal clock is 1 GHz.

ATS Sync 4X1G comes with a software library that allows user software to control it.

Sync 4X1G interfaces to AlazarTech digitizer cards using a proprietary high-frequency cable. The provided

cable terminates in a ganged micro-miniature RF connector, which is used to connect to the Sync 4X1G.

The other end of the cable terminates in male SMA and BNC connectors, which are used to connect to the digitizer External Clock and External Trigger respectively.

Since ATS9373 TRIG IN input uses an SMA connector, users must use a BNC-SMA adapter.

Sync 4X1G connects to the host computer using a provided USB cable. Please refer to the [ATS Sync 4X1G datasheet](#) for full specifications.

### Asynchronous DMA Driver

The various AutoDMA schemes discussed above provide hardware support for optimal data transfer. However, a corresponding high-performance software mechanism is also required to make sure sustained data transfer can be achieved.

This proprietary software mechanism is called Async DMA (short for Asynchronous DMA).

A number of data buffers are posted by the application software. Once a data buffer is filled, i.e. a DMA has been completed, ATS9373 hardware generates an interrupt, causing an event message to be sent to the application so it can start consuming data. Once the data has been consumed, the application can post the data buffer back on the queue. This can go on indefinitely.

One of the great advantages of Async DMA is that almost 95% of CPU cycles are available for data processing, as all DMA arming is done on an event-driven basis.

To the best of our knowledge, no other supplier of waveform digitizers provides asynchronous software drivers. Their synchronous drivers force the CPU to manage data acquisition, thereby slowing down the overall data acquisition process.

### Output Data Format

By default, ATS9373 data comes out as unsigned binary, where code 0 represents the negative full scale, code  $(2^n-1)$  represents the positive full scale with zero being  $2^{n-1}$ .

It is possible to change the data format to signed binary using an API call. In signed binary format, zero is represented by code 0, positive full scale is represented by  $(2^{n-1}-1)$  and negative full scale is represented by  $(2^{n-1})$ .

### Data Packing Mode

By default, ATS9373 stores 12-bit data acquired by its on-board A/D converters as a 16-bit integer. Users can also choose to pack the data as 12-bit integers or even 8-bit integers. Being able to reduce the total amount of data being transferred can be very useful in data recording applications.

Note that it is the user application's responsibility to unpack the data. Also note that NPT Footers are not available in Data Packing Mode.

### Triggering

ATS9373 is equipped with sophisticated digital triggering options, such as programmable trigger thresholds and slope on any of the input channels or the External Trigger input.

While most oscilloscopes offer only one trigger engine, ATS9373 offers two trigger engines (called Engines J and K).

The user can specify the number of records to capture in an acquisition, the length of each record and the amount of pre-trigger data.

A programmable trigger delay can also be set by the user. This is very useful for capturing the signal of interest in a pulse-echo application, such as ultrasound, radar, lidar etc.

### External Trigger Input

ATS9373 external trigger input (TRIG IN) can be set as an analog input with  $\pm 2.5$  V full scale input range and 50  $\Omega$  input impedance, or a 3.3 V TTL input.

When TTL input is selected, the input impedance increases to approximately 6.6 k $\Omega$ , making it easier to drive the TRIG IN input from high-output impedance sources.

Note: If full 12-bit resolution is required, users should select CH A or CH B as the trigger source. When the External Trigger Input is used as the trigger source, the least significant bit (LSB) of each 12-bit sample is replaced by the state of the external trigger signal source.

### Timebase

ATS9373 timebase can be controlled either by on-board low-jitter VCO or by optional External Clock.

On-board low-jitter VCO uses a 10 MHz TCXO as a reference clock. Clock buffers used feature less than 76 fs<sub>RMS</sub> additive jitter.

### Optional External Clock

While the ATS9373 features low-jitter VCO and a 10 MHz TCXO as the source of the timebase system, there may be occasions when digitizing has to be synchronized to an external clock source.

ATS9373 External Clock option provides an SMA input for an external clock signal, which should have a high slew rate. Signal levels, specified in detail on page 9, must be respected.

Input impedance for the External Clock input is fixed at 50  $\Omega$ . External clock input is always AC-coupled.

There are two types of External Clock supported by ATS9373. These are described below.

### Fast External Clock

In non-DES mode, a new sample is taken by the on-board ADCs for each rising edge of this External Clock signal.

In DES mode, a new sample is taken on each rising and falling edge of this External Clock signal.

In order to satisfy the clocking requirements of the ADC chips being used, Fast External Clock frequency must always be higher than 300 MHz in non-DES mode (500 MHz in DES mode) and lower than 2 GHz.

For customers whose external clocks may go lower than 300 MHz during the acquisition, it is possible to have AlazarTech screen the ATS9373 boards for external clock operation down to 100 MHz (Order number ATS9373-006).

This is the ideal clocking scheme for OCT applications.

### 10 MHz Reference Clock

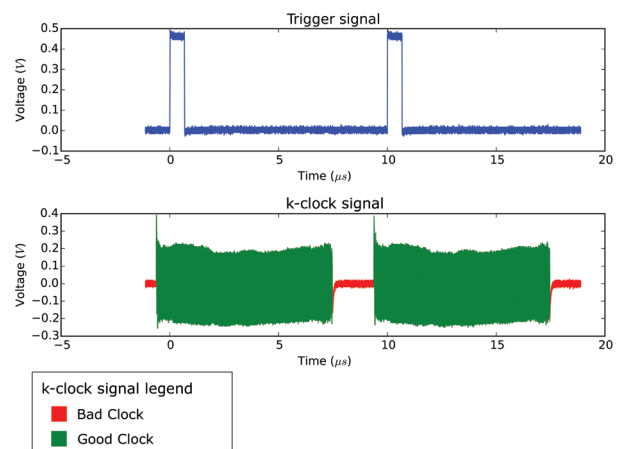
It is possible to generate the sampling clock based on an external 10 MHz reference input. This is useful for RF systems that use a common 10 MHz reference clock.

ATS9373 uses an on-board low-jitter PLL to generate a user-specified high-frequency clock used by the ADC. This sampling clock can be any multiple of 1 MHz between 300 MHz and 2 GHz.

### OCT Ignore Bad Clock

The ADCs used on the ATS9373 require the external clock frequency to be lower than 2 GHz and above 300 MHz (above 500 MHz in DES mode). In OCT applications, these limits cannot always be respected due to the nature of the optical source.

AlazarTech's *OCT Ignore Bad Clock* technology allows safe operation with these out-of-specification clocks without requiring the use of a dummy clock in the source.



Users must set the trigger source to be External Trigger input (TRIG IN) when using OCT Ignore Bad Clock. The External Trigger must be set in TTL input range. If

these two conditions are not met, the OCT Ignore Bad Clock circuitry will not function.

Firmware version 26.04+, driver version 5.10.6+ and SDK 7.1.3+ are required to take advantage of OCT Ignore Bad Clock. For existing customers, these firmware and driver versions are available for download from AlazarTech's website free of charge.

See [www.alazartech.com/en/technology/oct-ignore-bad-clock/](http://www.alazartech.com/en/technology/oct-ignore-bad-clock/) for more information on this technology.

### AUX Connector

ATS9373 provides an AUX (Auxiliary) SMA connector that is configured as a Trigger Output connector by default.

When configured as a Trigger Output, AUX SMA connector outputs a 5 Volt TTL signal synchronous to the ATS9373 Trigger signal, allowing users to synchronize their test systems to the ATS9373 Trigger.

When combined with the Trigger Delay feature of the ATS9373, this option is ideal for ultrasonic and other pulse-echo imaging applications.

AUX connector can also be used as a Trigger Enable Input for Frame Capture (B-scan) applications. In fact, this is the most popular use of the AUX connector in OCT applications.

### Wideband Input Upgrade

ATS9373 Wideband Input option provides up to 1.9 GHz analog input on two channels (non-DES mode) or up to 1.7 GHz on one channel (DES mode). Input impedance is fixed at 50  $\Omega$ .

### Calibration

Every ATS9373 digitizer is factory calibrated to NIST- or CNRC-traceable standards. To recalibrate an ATS9373, the digitizer must be shipped back to the factory.

### Test Reports

AlazarTech thoroughly tests every digitizer that leaves the factory; each board must pass hundreds of tests before it is shipped to a customer.

In addition to an 8-hour burn-in, each digitizer undergoes a full Performance Verification Test (PVT) where functionality such as external trigger, internal & external clock are tested, and characteristics such as frequency response and bandwidth are measured to ensure that they are within specification.

Customers can obtain test reports for their AlazarTech digitizer (for a fee) by adding the following order number to their digitizer order: *TestReport*. If ordered after board shipment, use order number: *TestReport-AO*.

### On-Board Monitoring

Adding to the reliability offered by ATS9373 are the on-board diagnostic circuits that constantly monitor

over 20 different voltages, currents and temperatures. LED alarms are activated if any of the values surpass the limits.

### AlazarDSO Software

ATS9373 is supplied with the powerful AlazarDSO software that allows the user to setup the acquisition hardware and capture, display and archive the signals.

The Stream-To-Memory command in AlazarDSO allows users to stream a large dataset to motherboard memory.

AlazarDSO software also includes powerful tools for benchmarking the computer bus and disk drive.

### Software Development Kits

AlazarTech provides easy to use software development kits for customers who want to integrate the ATS9373 into their own software.

A Windows-compatible software development kit, called ATS-SDK, includes headers, libraries and source code sample programs written in C/C++, C#, Python, MATLAB, and LabVIEW.

A Linux-compatible software development kit, called ATS-devel, includes headers, libraries and source code sample programs written in C++ and Python.

These programs can fully control the ATS9373 and acquire data in user buffers.

The purchase of an ATS-SDK license includes a subscription that allows users to download ATS-SDK updates from the AlazarTech website for period of 12 months from the date of purchase.

Customers who want to download new releases beyond this 12 month period should purchase extended maintenance (order number ATS-SDK-1YR).

### ATS-GPU

ATS-GPU is a software library developed by AlazarTech to allow users to do real-time data transfer from ATS9373 to a GPU card at rates up to 6.9 GB/s.

Interfacing waveform digitizers to GPUs involves creating a software mechanism to move data from one to the other and back to user buffers. The standard techniques used most often can get the job done, but feature very low data throughput due to software overheads.

AlazarTech designed ATS-GPU to eliminate this software bottleneck so that data can be moved from AlazarTech digitizers to GPUs and from GPUs to user buffers at full PCIe bus speeds. Once the data is available in GPU memory, many types of digital signal processing (DSP) can be done on this data at near-hardware speeds.

**ATS-GPU-BASE** is supplied with an example user application in source code. The application includes GPU kernels that use ATS-GPU to receive data, do very simple signal processing (data inversion), and copy

the processed (inverted) data back to a user buffer. All this is done at the highest possible data transfer rate.

Programmers can replace the data inversion code with application-specific signal processing kernels to develop custom applications.

Version 23.1.0 and higher of ATS-GPU-BASE includes a Boxcar Averaging example kernel that provides the ability to perform real-time boxcar averaging on signals acquired by AlazarTech waveform digitizers. It uses optimized GPU routines that allow raw data acquisition rates up to the full digitizer transfer speed (6.9 GB/s for ATS9373). This signal processing module can lead to a major improvement of signal-to-noise ratio without using CPU resources and without doing FPGA programming.

**ATS-GPU-OCT** is the optional OCT Signal Processing library for ATS-GPU. It contains floating-point FFT routines that have also been optimized to provide the maximum number of FFTs per second. Kernel code running on the GPU can do zero-padding, apply a windowing function, do a floating-point FFT, calculate the amplitude and convert the result to a log scale. It is also possible to output phase information.

FFTs can be done on triggered data or on continuous gapless stream of data. It is also possible to do spectral averaging. Our benchmarks showed that it was possible to do 1,900,000 FFTs per second when capturing data in single-channel mode and using a NVIDIA® Quadro® P5000 GPU.

**ATS-GPU-NUFFT** is an extension of ATS-GPU-OCT that allows non-uniform FFTs to be performed on data acquired uniformly in time domain using a fixed sampling rate. For SS-OCTs where the wavelength does not vary linearly in time, a fixed sampling rate results in data that is non-uniformly distributed in frequency domain. ATS-GPU-NUFFT allows linearized FFTs to be performed on such data.

ATS-GPU supports 64-bit Windows and 64-bit Linux for CUDA®-based development.

### Support for Windows

Windows support for ATS9373 includes Windows 11, Windows 10, Windows Server® 2019, and Windows Server 2016. As Windows Server 2019 and 2016 are seldom used by our customers, they are expected to work but are not regularly tested with each software release. If there are issues related to Windows Server 2016 or 2019, tech support may not be as rapid as for other operating systems.

Only 64-bit Windows operating systems are supported. The last 32-bit Windows driver is version 5.10.24, which supports Windows 7.

Microsoft mainstream support ended in 2018 for Windows 8.1 and Windows Server 2012 R2. As such,

AlazarTech has ceased development on these operating systems. Current software and driver releases may work with these operating systems but they are not officially supported.

Due to lack of demand and due to the fact that Microsoft no longer supports these operating systems, AlazarTech no longer supports Windows 8, Windows 7, Windows XP, Windows Vista, Windows Server 2012, Windows Server 2008 R2, and Windows Server 2008.

### Linux Support

AlazarTech offers ATS9373 Dynamic Kernel Module Support (DKMS) drivers for the following Linux distributions: Ubuntu, Debian, and RHEL®.

AlazarTech DKMS drivers may work for other Linux distributions but they have not been tested and technical support may be limited.

Users can download the DKMS driver and associated library for their specific distribution here:

[www.alazartech.com/en/linux-drivers/ats9373/2/](http://www.alazartech.com/en/linux-drivers/ats9373/2/)

Only 64-bit Linux operating systems are supported.

A GUI application called AlazarFrontPanel that allows simple data acquisition and display is also provided.

ATS-SDK includes source code example programs for Linux, which demonstrate how to acquire data programmatically using a C compiler. Note that example programs are only provided for Python and C++.

### Upgrading Your Digitizer in The Field

It is always recommended to get upgrades installed at the factory with the initial digitizer purchase.

If the digitizer is still under warranty, it may be possible to add certain upgrades in the field, but there is a small chance that the upgrade will not work, in which case the digitizer would need to be returned to the factory to complete the upgrade.

If the digitizer is no longer under warranty, the upgrade must be done at the factory and there will be a minimum service charge in addition to the cost of the upgrade. This is so that AlazarTech can verify that the digitizer meets basic performance levels prior to any upgrade.

### Technical Support

AlazarTech is known for its world-class technical support. Customers receive free technical support on hardware products that are under warranty.

As of November 1, 2025, AlazarTech digitizers come with a standard two (2) year parts and labor warranty. This warranty can be extended for a fee (more information can be found in the next section: *Extended Warranty*).

If your waveform digitizer is out of warranty, you will not be eligible for free technical support on AlazarTech

hardware or software products and you will need to purchase technical support hours (order number SUPPORT-HR5) to obtain assistance.

In addition, any necessary repairs to your out-of-warranty hardware products will carry a minimum bench charge.

### Extended Warranty

As of November 1, 2025, the purchase of an ATS9373 includes a standard two (2) year parts and labor warranty. AlazarTech hardware parts and labor warranty should be maintained to ensure uninterrupted access to technical support and warranty repair services.

Customers may extend their warranty by ordering the appropriate Extended Warranty (ATS9373-061 for ATS9373-A3; ATS9373-062 for ATS9373-D6). This should be purchased before expiration of the standard warranty (or before expiration of an Extended Warranty).

If the warranty lapses, renewal at a later date will be subject to a reinstatement fee, to cover the administrative costs of warranty reinstatement, and a 6-month waiting period for repair claims. Furthermore, warranty must be extended at least 6 months past the current date.

Get your warranty end date by registering your product at: [www.alazartech.com/en/my-account/my-products/](http://www.alazartech.com/en/my-account/my-products/).

### Export Control Classification

According to the latest *Export and brokering controls handbook*, amended August 2019, ATS9373 is classified by the Export Controls Division of the Government of Canada as a controlled product under ECL 1-3.A.2.h, which is equivalent to ECCN 3A002.h.

For sales where the ultimate country destination is Canada or U.S., no export permit is required unless the end-use of ATS9373, in part or in its entirety, is related to the development or deployment of weapons of mass destruction.

For shipments to [eligible destinations](#), AlazarTech is allowed to export under a general export permit, unless the end-use of ATS9373, in part or in its entirety, is related to the development or deployment of weapons of mass destruction. For general export permit shipments, users must provide a signed export compliance statement (ECS) that includes a detailed description of the end-use. Shipments cannot be made without a signed ECS on file.

For all other countries, and for all cases where the end-use of ATS9373, in part or in its entirety, is related to the development or deployment of weapons of mass destruction, an export permit is required, which will require extensive details on the end-use and end-users. This process may cause significant delays.

### RoHS Compliance

ATS9373 is fully RoHS compliant, as defined by Directive 2015/863/EU (RoHS 3) of the European Parliament and of the Council of 31 March 2015 on the restriction of the use of certain hazardous substances in electrical and electronic equipment.

All manufacturing is done using RoHS-compliant components and lead-free soldering.

### REACH Compliance

AlazarTech verifies its supply chain against the latest REACH requirements. A compliance statement is usually available within 6 months of release of the European Chemicals Agency (ECHA) updated substance of very high concern (SVHC), Authorizations, and Restrictions lists.

### EC Conformity

ATS9373 conforms to the following standards:

Electromagnetic Emissions:

CISPR 32:2015 / EN 55032:2015 (Class A):  
Multimedia Equipment (MME) Radio disturbance characteristics. Limits and method of measurement.

Electromagnetic Immunity:

EN 55035:2017/A11:2020:  
Multimedia Equipment (MME) Immunity characteristics — Limits and methods of measurement:  
EN 61000-4-2, EN 61000-4-3, EN 61000-4-4,  
EN 61000-4-5, EN 61000-4-6, EN 61000-4-8,  
EN 61000-4-11.

Safety:

IEC 62368-1:2014 / EN 62368-1:2014+A11:2017:  
Audio/video, information and communication technology equipment - Part 1: Safety requirements.

ATS9373 also follows the provisions of the following directives: 2014/35/EU (Low Voltage Equipment); 2014/30/EU (Electromagnetic Compatibility).

### FCC & ICES-003 Compliance

ATS9373 has been tested and found to comply with the limits for a Class A digital device, pursuant to part 15, subpart B (2015) of the FCC Rules, and the Canadian Interference-Causing Equipment Standard ICES-003:2016.





# ATS9373

## 4 GS/s 12-Bit PCIe Gen 3 Digitizer

### System Requirements

Personal computer with at least one free x8 or x16 or open-ended PCI Express slot (must be Gen 3 [or higher] x8 slot to achieve full data throughput) and 16 GB RAM; if using AlazarDSO, 16 GB of free hard disk space is also required.

### Power Requirements

+12 V	2.5 A, typical
+3.3 V	0.5 A, typical

### Physical

Size	Single slot, half length PCI Express card (4.377 inches x 6.5 inches excluding the connectors protruding from the front panel)
Weight	250 g

### I/O Connectors

ECLK, CH A, CH B, TRIG IN, AUX I/O	SMA female connector
------------------------------------	----------------------

### Environmental

Operating temperature	0 to 55 degrees Celsius, ambient
Storage temperature	-20 to 70 degrees Celsius
Relative humidity	5 to 95%, non-condensing

### Acquisition System

Resolution	12 bits
Bandwidth (-3 dB) DC-coupled, 50 $\Omega$	Standard DC - 1.0 GHz
Bandwidth with Wideband Upgrade	
Non-DES Mode	DC - 1.9 GHz
DES Mode	DC - 1.7 GHz
Number of channels	2, simultaneously sampled
Maximum Sample Rate	4 GS/s single shot for 1 channel 2 GS/s single shot for 2 channels
Minimum Sample Rate	1 KS/s single shot for internal clocking
Full Scale Input ranges 50 $\Omega$ input impedance:	$\pm 400$ mV
DC accuracy	$\pm 2\%$ of full scale in all ranges
Input coupling	DC
Input impedance	50 $\Omega$ $\pm 1\%$
Absolute maximum input 50 $\Omega$	$\pm 4$ V (DC + peak AC for CH A, CH B and TRIG IN only without external attenuation)

### Acquisition Memory System

Memory Size	8 GB (4 Gigasamples in one channel mode)
Record Length	Software-selectable with 128-point resolution. Record length must be a minimum of 256 points. There is no upper limit on the maximum record length.
Number of Records	Software selectable from a minimum of 1 to a maximum of infinite number of records

Pre-trigger depth	From 0 to 8176 for single channel From 0 to 4088 for dual channel
Post-trigger depth	Record Length - Pre-Trigger Depth

### Timebase System

Timebase options	Internal Clock or External Clock (Optional)
Internal Clock accuracy	$\pm 2$ ppm
Internal Sample Rates	
DES mode:	4 GS/s, 3.6 GS/s, 3 GS/s, 2.4 GS/s
Non-DES mode:	2 GS/s, 1.8 GS/s, 1.5 GS/s, 1.2 GS/s, 1 GS/s, 800 MS/s, 500 MS/s, 200 MS/s, 100 MS/s, 50 MS/s, 20 MS/s, 10 MS/s, 5 MS/s, 2 MS/s, 1 MS/s, 500 KS/s, 200 KS/s, 100 KS/s, 50 KS/s, 20 KS/s, 10 KS/s, 5 KS/s, 2 KS/s, 1 KS/s

### Dynamic Parameters

Typical values measured on the 400 mV range of CH A of a randomly selected ATS9373. Input signal was provided by an SRS SG384 signal generator, followed by a 9-pole, 100 MHz band-pass filter (TTE Q36T-100M-10M-50-720BMF). Input frequency was set at 99.9 MHz and output amplitude was set to approximately 95% of the full scale input.

SNR	57.1 dB
SINAD	56.6 dB

Note that these dynamic parameters may vary from one unit to another, with input frequency and with the full scale input range selected.

### Optional ECLK (External Clock) Input

Signal Level	500 mV <sub>p-p</sub> to 2 V <sub>p-p</sub>
Input impedance	50 $\Omega$
Input coupling	AC
Maximum frequency for Fast External Clock	2 GHz
Minimum frequency for Fast External Clock	500 MHz in DES mode 300 MHz in non-DES mode 100 MHz for Screened External Clock boards
Sampling Edge	Rising and falling in DES mode Rising only in non-DES mode

### Optional 10 MHz Reference PLL Input

Signal Level	450 mV <sub>p-p</sub> to 2 V <sub>p-p</sub>
Input impedance	50 $\Omega$
Input Coupling	AC coupled
Input Frequency	10 MHz $\pm$ 0.1 MHz
Maximum frequency	10.1 MHz
Minimum frequency	9.9 MHz
Sampling Clock Freq.	Any multiple of 1 MHz between: 300 MHz and 2 GHz in non-DES mode 500 MHz and 2 GHz in DES mode



# ATS9373

## 4 GS/s 12-Bit PCIe Gen 3 Digitizer

### Triggering System

Mode	Edge triggering with hysteresis
Comparator Type	Digital comparators for internal (CH A, CH B) triggering and analog comparators for TRIG IN (External) triggering
Number of Trigger Engines	2
Trigger Engine Combination	Engine J, engine K, J OR K, software selectable
Trigger Engine Source	CH A, CH B, TRIG IN, Software or None, independently software selectable for each of the two Trigger Engines
Hysteresis	±5% of full scale input, typical
Trigger sensitivity	±10% of full scale input range. This implies that the trigger system may not trigger reliably if the input has an amplitude less than ±10% of full scale input range selected
Trigger level accuracy	±5%, typical, of full scale input range of the selected trigger source
Bandwidth	250 MHz
Trigger Delay	Software selectable from 0 to 9,999,999 sampling clock cycles
Trigger Timeout	Software selectable with a 10 µs resolution. Maximum settable value is 3,600 seconds. Can also be disabled to wait indefinitely for a trigger event

### TRIG IN (External Trigger) Input

Input type	Analog or 3.3 V TTL, software-selectable
Input coupling	DC only
Analog input impedance	50 Ω
Analog bandwidth (-3 dB)	DC - 250 MHz
Analog input range	±2.5 V
Analog DC accuracy	±10% of full scale input
Analog absolute max. input	±8 V (DC + peak AC without external attenuation)
TTL input impedance	6.6 kΩ ±10%
TTL min. pulse width	32 ADC sampling clocks
TTL min. pulse amplitude	2 Volts
TTL absolute max. input	-0.7 V to +5.5 V

### Auxiliary I/O (AUX I/O)

Signal direction	Input or Output, software-selectable. Trigger Output by default
Output types:	Trigger Output, Pacer (programmable clock) Output, Software-controlled Digital Output
Input types:	Trigger Enable Software-readable Digital Input
Output	
Amplitude:	5 Volt TTL
Synchronization:	Synchronized to a clock derived from the ADC sampling clock. Divide-by-4 clock (dual channel mode) or divide-by-8 clock (single channel or DES mode)

Input	
Amplitude:	3.3 Volt TTL
Input coupling:	DC

### Materials Supplied

ATS9373 PCI Express Card  
ATS9373 Software Installer (downloadable from [product page](#))

### Certification and Compliances

RoHS 3 (Directive 2015/863/EU) Compliance  
REACH Compliance  
CE Marking — EC Conformity  
FCC Part 15 Class A / ICES-003 Class A Compliance

*All specifications are subject to change without notice*

† AlazarDSO, AlazarTech, and AlazarTech ATS are registered trademarks of Alazar Technologies Inc. MATLAB is a trademark and/or registered trademark of The MathWorks, Inc. LabVIEW is a trademark and/or registered trademark of National Instruments. Windows and Windows Server are trademarks and/or registered trademarks of Microsoft Corporation in the U.S. and/or other countries. Linux is a registered trademark of Linus Torvalds. ASUS is either a US registered trademark or trademark of ASUSTeK Computer Inc. in the United States and/or other countries. RHEL is a registered trademark of Red Hat, Inc. in the United States and other countries. CUDA, NVIDIA, and Quadro are trademarks and/or registered trademarks of NVIDIA Corporation in the U.S. and/or other countries. All other trademarks are the property of their respective owners.



# ATS9373

## 4 GS/s 12-Bit PCIe Gen 3 Digitizer

### ORDERING INFORMATION

ATS9373-A3	ATS9373-001
ATS9373-D6	ATS9373-002
ATS9373: External Clock Upgrade	ATS9373-005
ATS9373: Screened External Clock Upgrade	ATS9373-006
ATS9373: Wideband Input Upgrade	ATS9373-009
ATS9373-A3: One Year Extended Warranty	ATS9373-061
ATS9373-D6: One Year Extended Warranty	ATS9373-062
Test reports ordered with board	TestReport
Test reports ordered after board shipment	TestReport-AO
ATS9373: Sync 4X1G	ATS9373-025
ATS Sync xX1G: AC Wall Adapter	SYNC-X1G-PWR
ATS Sync 4X1G: GRF1-SMA/BNC cable	SYNC-4X1-CBL
SYNC-4X1G: One Year Extended Warranty	SYNC-4X1-061
ATS-SDK purchased with a digitizer board or ATS-GPU: License + 1 Year Subscription (Supports C/C++, Python, MATLAB, and LabVIEW)	ATS-SDK
ATS-SDK purchased separately: License + 1 Year Subscription + 5 hours of technical support (Supports C/C++, Python, MATLAB, and LabVIEW)	ATS-SDK-WOD
ATS-GPU-BASE: GPU Streaming Library License + 1 Year Subscription	ATSGPU-001
ATS-GPU-OCT: Signal Processing Library License + 1 Year Subscription (requires ATSGPU-001)	ATSGPU-101
ATS-GPU-NUFFT: ATS-GPU-OCT Extension for fixed-frequency sampled data License + 1 Year Subscription (requires ATSGPU-001 & ATSGPU-101)	ATSGPU-201
5 Hours of technical support	SUPPORT-HR5

#### Manufactured By:

#### Alazar Technologies, Inc.

6600 TRANS-CANADA HIGHWAY, SUITE 310  
POINTE-CLAIRE, QC, CANADA H9R 4S2

TOLL FREE: 1-877-7-ALAZAR OR 1-877-725-2927  
TEL: (514) 426-4899 FAX: (514) 426-2723

E-MAIL: sales@alazartech.com

### DATASHEET REVISION HISTORY

#### Changes from version 1.9 (Jan 2025) to version 1.9a

	<b>Section, Page</b>
Changed section name. Previously <i>Maximum Sustained Transfer Rate</i>	Maximum Sustained Bus Throughput, pg. 2
Added section	Digitizer Transfer Speed, pg. 3
Updated hyperlink to recommended motherboards document	Recommended Motherboards or PCs, pg. 3
Added note about BNC-SMA adapter	Multi-board Systems using ATS 4X1G, pg. 4
Replaced <i>full bus speed</i> with <i>digitizer transfer speed</i>	ATS-GPU, pg. 7
Removed Linux source code	Linux Support, pg. 7
Updated standard warranty period from one year to two years	Technical Support, pg. 7
Updated standard warranty period from one year to two years Removed limit on the number of purchasable extended warranties	Extended Warranty, pg. 8

#### Changes from version 1.6P (Feb 2024) to version 1.9

	<b>Section, Page</b>
Added information on ATS9373 PCB version 1.9 Modified PCIe specification slot requirements to include open-ended slots Added details on PCIe Gen 4 & Gen 5 Data Link Feature Exchange	PCI Express Gen 3 Bus Interface, pg. 2
Removed note re: CPUs with Gen5 support may not recognize ATS9373	Recommended Motherboards or PCs, pg. 2
Added section	Test Reports, pg. 6
Updated system requirements	System Requirements, pg. 9
Updated power requirements	Power Requirements, pg. 9
Replaced install disk on USB flash drive with downloadable content	Materials Supplied, pg. 10
Added test report order numbers	Ordering Information, pg. 11

#### Changes from version 1.6o (Dec 2023) to version 1.6P

	<b>Section, Page</b>
Added section on ATS9373: Sync 4X1G	Multi-board Systems using ATS 4X1G, pg. 4
Modified warranty reinstatement fee information	Extended Warranty, pg. 7
Specified that Operating temperature is ambient	Environmental, pg. 9
Added Sync 4X1G, its accessories and extended warranty: ATS9373-025, SYNC-X1G-PWR, SYNC-4X1-CBL, SYNC-4X1-061	Ordering Information, pg. 10

#### Changes from version 1.6N (Nov 2022) to version 1.6o

	<b>Section, Page</b>
Added note re: certain CPUs with Gen5 support may not recognize ATS9373 due to lack of PCI Express lanes	Recommended Motherboards or PCs, pg. 2
Removed section	FPGA-Based Digital Signal Processing, pg. 3
Corrected unsigned binary positive full scale to $2^n-1$ (was incorrectly stated as $2^{n-1}-1$ ), corrected signed binary positive full scale to $2^{n-1}-1$ (was incorrectly stated as $2^{n-2}-1$ ) and negative full scale $2^{n-1}$ (was incorrectly stated as $2^{n-2}$ ).	Output Data Format, pg. 4
Added note about trigger source	OCT Ignore Bad Clock, pg. 5
Added paragraph on Boxcar Averaging for <i>ATS-GPU-BASE</i>	ATS-GPU, pg. 6
Modified to include new warranty reinstatement policy	Extended Warranty, pg. 7
Added section for REACH Compliance	REACH Compliance, pg. 8
Trigger Engine Source: Corrected label for External Trigger from EXT to TRIG IN	Triggering System, pg. 10
Added REACH Compliance to list of Certification and Compliances	Certification and Compliances, pg. 10

#### Changes from version 1.6M (July 2022) to version 1.6N

	<b>Section, Page</b>
Removed 32-bit Windows	Feature Table, pg. 1
Added new section to specify default output data format is unsigned binary and that it can be changed to signed binary via an API call.	Output Data Format, pg. 4
Separate description for Linux SDK to detail supported programming languages	Software Development Kits, pg. 6
Noted that only 64-bit Windows is supported and that the last driver version that supports 32-bit Windows is 5.10.24.	Support for Windows, pg. 6
Updated download link for the Linux driver and associated library, and added note: ATS-SDK example programs are only provided for Python and C++	Linux Support, pg. 7
Added new section to detail AlazarTech's upgrade policy	Upgrading Your Digitizer in The Field, pg. 7
Updated Electromagnetic Immunity standard to reflect most recent assessment	EC Conformity, pg. 8

### DATASHEET REVISION HISTORY

#### Changes from version 1.6L (Nov 2021) to version 1.6M

#### Section, Page

Changes to maintenance subscription inclusions: removed technical support	Software Development Kits, pg. 6
Added Windows 11	Support for Windows, pg. 6
Added new section to specify how AlazarTech handles technical support: Customers receive free technical support on hardware products that are under warranty. Out-of-warranty support requires the purchase of support hours.	Technical Support, pg. 7
Updated specification name from <i>Input protection</i> to <i>Absolute maximum input</i> Actual value did not change.	Acquisition System, pg. 9
Updated specification names (actual values did not change): <i>Analog input protection</i> to <i>Analog absolute max. input</i> <i>TTL input protection</i> to <i>TTL absolute max. input</i> .	TRIG IN (External Trigger) Input, pg. 10
Updated name for product <i>Software Development Kit</i> Now called: <i>ATS-SDK purchased with a digitizer board or ATS-GPU</i>	Ordering Information, pg. 10
Added products ATS-SDK-WOD and SUPPORT-HR5	Ordering Information, pg. 10

#### Changes from version 1.6K (Sept 2021) to version 1.6L

#### Section, Page

Specified number of extended warranties that users may purchase	Extended Warranty, pg. 7
Updated terminology to match the standard: changed <i>Information Technology Equipment (ITE)</i> to <i>Multimedia Equipment (MME)</i>	EC Conformity, pg. 7

#### Changes from version 1.6J (June 2021) to version 1.6K

#### Section, Page

Updated motherboard used for benchmarking	PCI Express Gen 3 Bus Interface, pg. 2
Updated support status for Windows 8.x and Windows Server versions 2012 R2, 2016, 2019	Support for Windows, pg. 6

#### Changes from version 1.6I (Jan 2020) to version 1.6J

#### Section, Page

Updated data throughput from 6.8 GB/s to 6.9 GB/s	Global change
Updated motherboard used for benchmarking	PCI Express Gen 3 Bus Interface, pg. 2
Updated section <i>ATS-GPU</i> and added paragraph on ATS-GPU-NUFFT	ATS-GPU, pg. 6
Updated Linux Support (RHEL) and added new DKMS drivers	Linux Support, pg. 6
Updated product registration URL	Extended Warranty, pg. 6
Updated standards and directives	EC Conformity, pg. 7
Added year (2015) for FCC Part 15 and updated year of ICES-003 standard	FCC & ICES-003 Compliance, pg. 7
Corrected TRIG IN Input type, removed: (5 V compliant)	TRIG IN (External Trigger) Input, pg. 9
Added Auxiliary I/O input coupling (DC)	Auxiliary I/O (AUX I/O), pg. 9
Updated software descriptions and added order number for ATS-GPU-NUFFT	Ordering Information, pg. 9

#### Changes from version 1.6H (May 2019) to version 1.6I

#### Section, Page

Changed <i>Sampling Rate</i> column to <i>Max. Sample Rate</i>	Feature Table, pg. 1
Replaced signal sine or square wave requirement with high slew rate Because signal levels differ for Fast External Clock and 10 MHz Reference Clock, replaced min. and max. amplitude with a note that signal levels specified on page 8 must be respected.	Optional External Clock, pg. 5
Removed qualified metrology lab as option for recalibrating ATS9373	Calibration, pg. 5
Specified Windows 7 version support, re-ordered list of operating systems, and added end-of-support notice for Windows 7 and Windows Server 2008 R2	Support for Windows, pg. 6
Specified Linux distributions: CentOS, Debian, and Ubuntu	Linux Support, pg. 6
Updated handbook name and date: Export and brokering controls handbook, amended August 2019	Export Control Classification, pg. 7
Changed signal level from 400 mV <sub>p-p</sub> to "500 mV <sub>p-p</sub> to 2 V <sub>p-p</sub> " Removed maximum amplitude, information included in signal level	Optional ECLK (External Clock) Input, pg. 8
Changed signal level from ±200 mV to "450 mV <sub>p-p</sub> to 2 V <sub>p-p</sub> " Removed sine or square wave requirement	Optional 10 MHz Reference PLL Input, pg. 8
Corrected Output types (removed Busy Output and added Pacer Output)	Auxiliary I/O (AUX I/O), pg. 9

### DATASHEET REVISION HISTORY

#### Changes from version 1.6G (Dec 2018) to version 1.6H

	<b>Section, Page</b>
Updated ATS-GPU data transfer rate and benchmarks (FFTs per second and GPU)	ATS-GPU, pg. 6
Removed <i>ATS-GMA</i> section as this product is being <a href="#">discontinued</a>	ATS-GMA, pg. 6
Added section <i>Extended Warranty</i>	Extended Warranty, pg. 7
Updated effective date of the new Export Control Handbook (May 17, 2019)	Export Control Classification, pg. 7
Removed ATS-GMA order numbers (ATSGMA-001, ATSGMA-101)	Ordering Information, pg. 9
Updated Trademark information	pg. 9

#### Changes from version 1.6F (Sept 2018) to version 1.6G

	<b>Section, Page</b>
Added note about LSB being replaced by the state of the external trigger signal source	External Trigger Input, pg. 4

#### Changes from version 1.6E (Jan 2018) to version 1.6F

	<b>Section, Page</b>
Updated RoHS Compliance to RoHS 3	Global change
Updated product image	pg. 1
Clarified Operating System Support	Feature Table, pg. 1
Updated <i>Recommended Motherboards or PCs</i>	Recommended Motherboards or PCs, pg. 2
Correction of trigger engines: changed to J and K (instead of X and Y)	Triggering, pg. 4
Specified that External Trigger Input 3.3 V TTL input is 5 V-compliant	External Trigger Input, pg. 4
Added information on ATS-SDK license	Software Development Kits, pg. 6
Specified 64-bit version for Windows and Linux support	ATS-GPU, pg. 6
Added <i>ATS-GMA</i> section	ATS-GMA, pg. 6
Added list of supported Microsoft Windows versions	Support for Windows, pg. 6
Added <i>Acquisition Memory System</i> section	Acquisition Memory System, pg. 8
Clarified that Max. and Min. Frequencies are for Fast External Clock, and added Maximum Amplitude: 2 V <sub>p-p</sub>	Optional ECLK (External Clock) Input, pg. 8
Added "PLL" to section name for clarity, corrected Input Frequency tolerance, and added Max. and Min. Frequencies	Optional 10 MHz Reference PLL Input, pg. 8
Corrected Trigger Engine Combination	Triggering System, pg. 9
Clarified specs by providing separate specifications for Analog and TTL input, Added TTL min. pulse width, TTL min. pulse amplitude, and TTL input protection	TRIG IN (External Trigger) Input, pg. 9
Replaced TRIG OUT Output section with Auxiliary I/O (AUX I/O)	Auxiliary I/O (AUX I/O), pg. 9
Added subscription length for ATS-SDK, ATSGPU-001, ATSGPU-101, and added products ATSGMA-001, ATSGMA-101	Ordering Information, pg. 9
Added Trademark information	pg. 9

#### Changes from version 1.6D (Oct 2017) to version 1.6E

	<b>Section, Page</b>
Added FFT length	Overview, pg. 1
Added note about NPT Footers	No Pre-Trigger (NPT) AutoDMA, pg. 3
Added note about NPT Footers not being available in Data Packing Mode	Data Packing Mode, pg. 4
Updated external clock minimum amplitude. Correct value is 400 mV <sub>p-p</sub>	Optional External Clock, pg. 5
Added section on OCT Ignore Bad Clock	OCT Ignore Bad Clock, pg. 5
Added note about Trigger Enable Input use in OCT	AUX Connector, pg. 5
Added CNRC as calibration standard	Calibration, pg. 5
Added -BASE and -OCT to ATS-GPU description for clarity	ATS-GPU, pg. 6
Corrected size of card	Physical, pg. 8
Updated external clock Signal Level. Correct value is 400 mV <sub>p-p</sub> .	Optional ECLK (External Clock) Input, pg. 8
Updated email address	Manufactured By, pg. 9

#### Changes from version 1.6C (Sept 2017) to version 1.6D

	<b>Section, Page</b>
Updated description for product ATSGPU-001 & ATSGPU-101	Ordering Information System, pg. 8

### DATASHEET REVISION HISTORY

#### Changes from version 1.6B (July 2017) to version 1.6C

	<b>Section, Page</b>
Specified conditions for obtaining a Linux driver source code license	Linux Support, pg. 6
Added Export Control Classification information	Export Control Classification, pg. 6
Removed product ATS9373-LINUX	Ordering Information System, pg. 8
Added products ATS9373-061 and ATS9373-062	Ordering Information System, pg. 8
Replaced product ATSGPU-1YR with ATSGPU-001	Ordering Information System, pg. 8
Updated description for product ATSGPU-101	Ordering Information System, pg. 8

#### Changes from version 1.6A (July 2017) to version 1.6B

	<b>Section, Page</b>
Added missing Internal Sample Rate in Non-DES mode: 1.8 GS/s	Timebase System, pg. 7

#### Changes from version 1.6 (July 2016) to version 1.6A

	<b>Section, Page</b>
Added note about lower External Clock minimum frequency for cards with Screened External Clock	Overview, pg. 1
Corrected External Trigger input impedance for TTL input	External Trigger Input, pg. 4
Added Screened External Clock to Fast External Clock	Optional External Clock, pg. 5
Added section on Wideband Input	Wideband Input, pg. 5
Modified AlazarDSO description	AlazarDSO Software, pg. 5
Added Python support	Software Development Kit, pg. 5
Modified ATS-GPU description, now supports CUDA-based GPUs	ATS-GPU, pg. 5
Modified Linux Support description	Linux Support, pg. 6
Added section on RoHS Compliance	RoHS Compliance, pg. 6
Added section on EC Conformity	EC Conformity, pg. 6
Added section on FCC & ICES-003 Compliance	FCC & ICES-003 Compliance, pg. 6
Added minimum frequency for Screened External Clock	Optional ECLK (External Clock) Input, pg. 7
Updated External Trigger Input Impedance for TTL input to 6.6 k $\Omega$ $\pm$ 10%	TRIG IN (External Trigger) Input, pg. 8
Updated list of Certification and Compliances	Certification and Compliances, pg. 8
Updated product name for ATS9373-009	Ordering Information, pg. 8
Corrected order number for ATS9373-LINUX	Ordering Information, pg. 8
Removed products ATS9373-007, ATS9373-008	Ordering Information, pg. 8
Added products ATS9373-006, ATSGPU-1YR, ATSGPU-101	Ordering Information, pg. 8